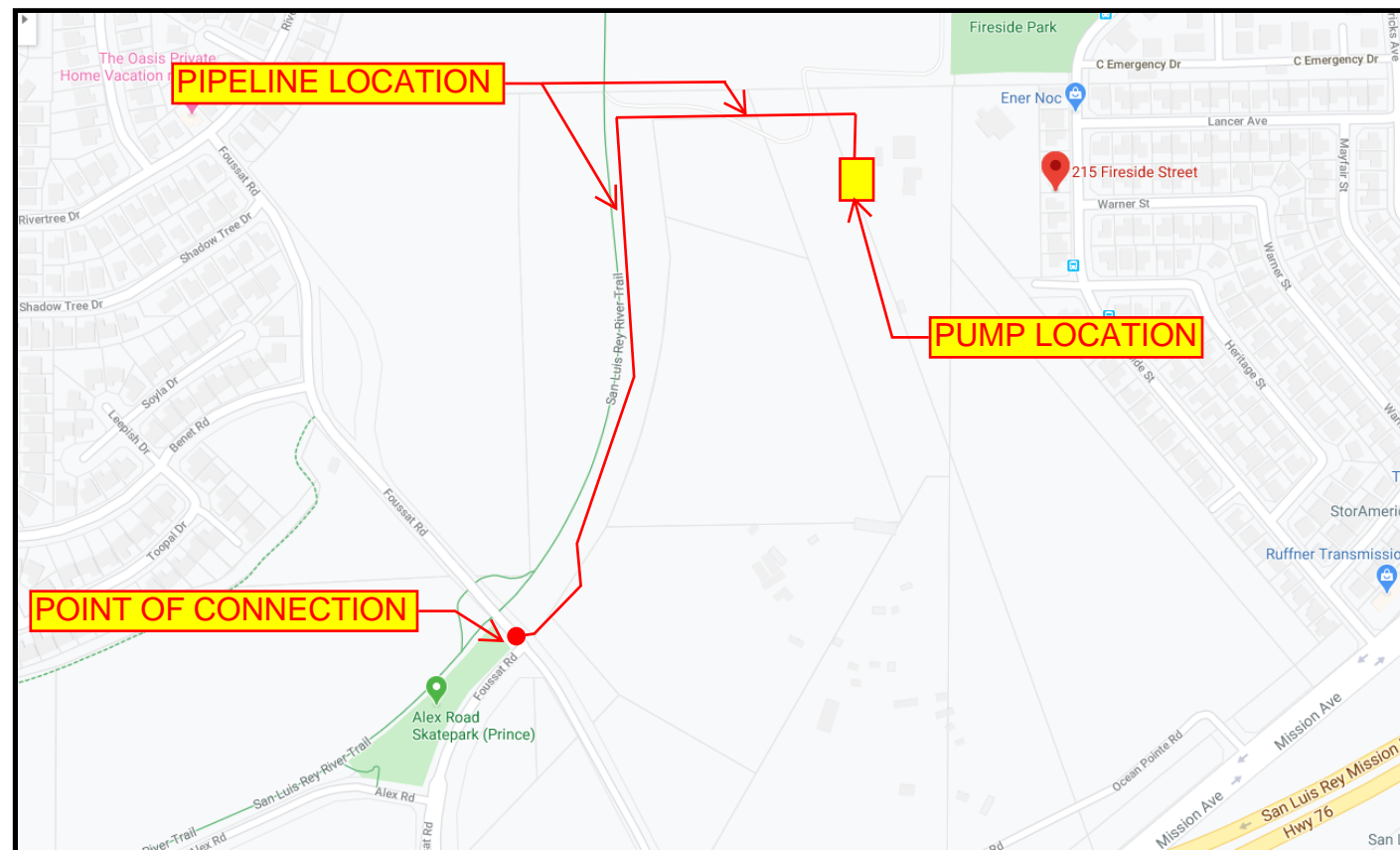
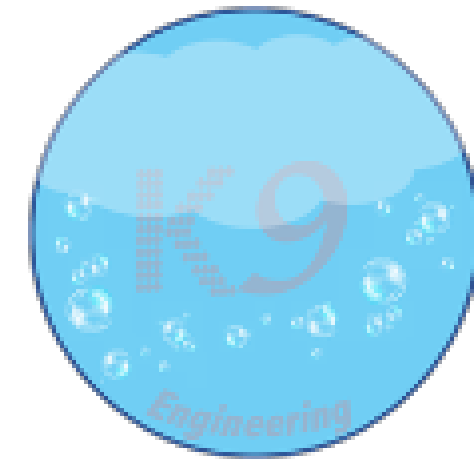


VICINITY MAP

# CITY OF OCEANSIDE

## DRAWINGS FOR 511 PUMP STATION 100% FINAL DESIGN



NOTES / KEY MAP

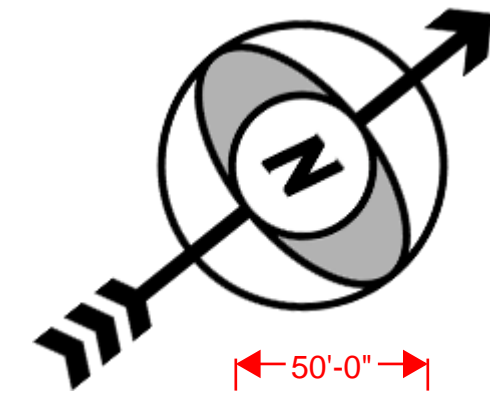
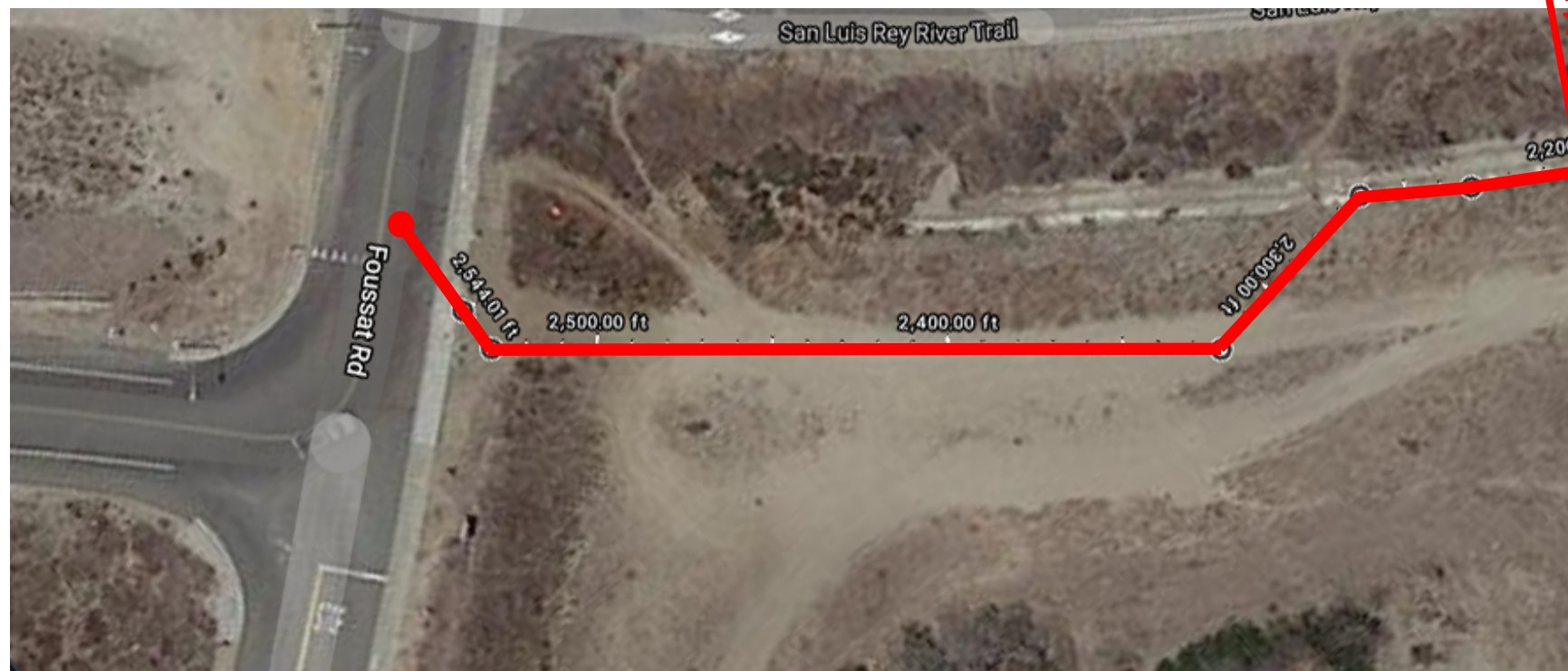
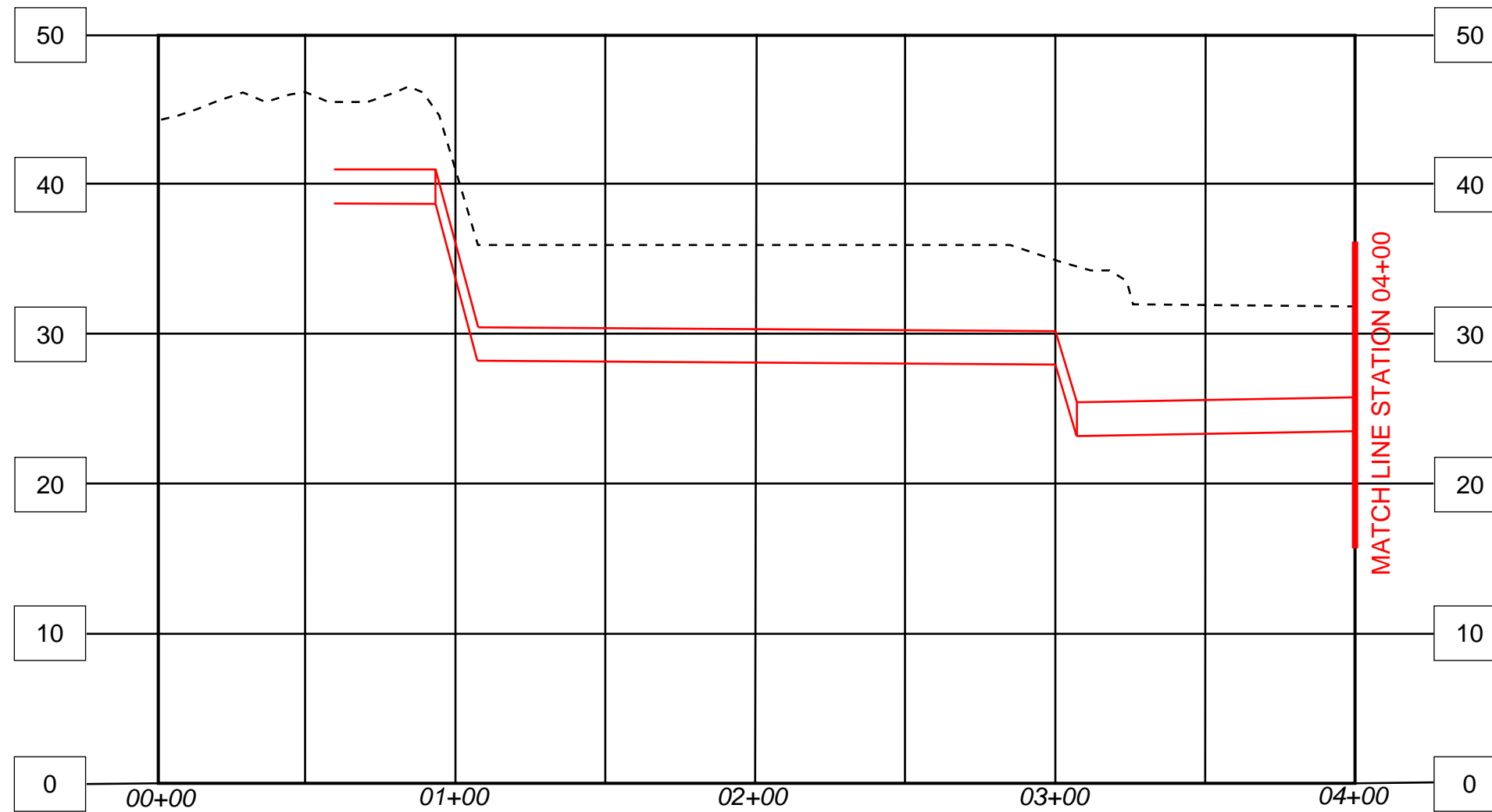
- GENERAL  
G-1  
CIVIL  
C-1  
C-2  
C-3  
C-4  
C-5  
C-6  
C-7

TITLE SHEET

- PLAN AND PROFILE STA 00+00 TO STA 04+00  
 PLAN AND PROFILE STA 04+00 TO STA 08+00  
 PLAN AND PROFILE STA 08+00 TO STA 012+00  
 PLAN AND PROFILE STA 12+00 TO STA 16+00  
 PLAN AND PROFILE STA 16+00 TO STA 21+00  
 PLAN AND PROFILE STA 21+00 TO STA 26+00  
 SECTION AND DETAILS

G-1

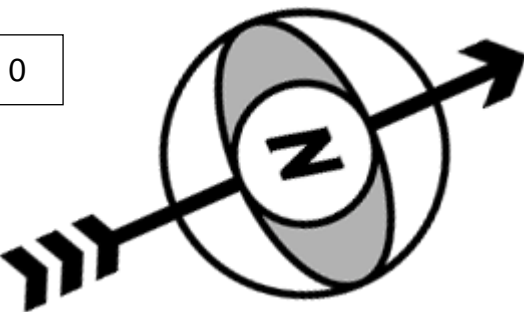
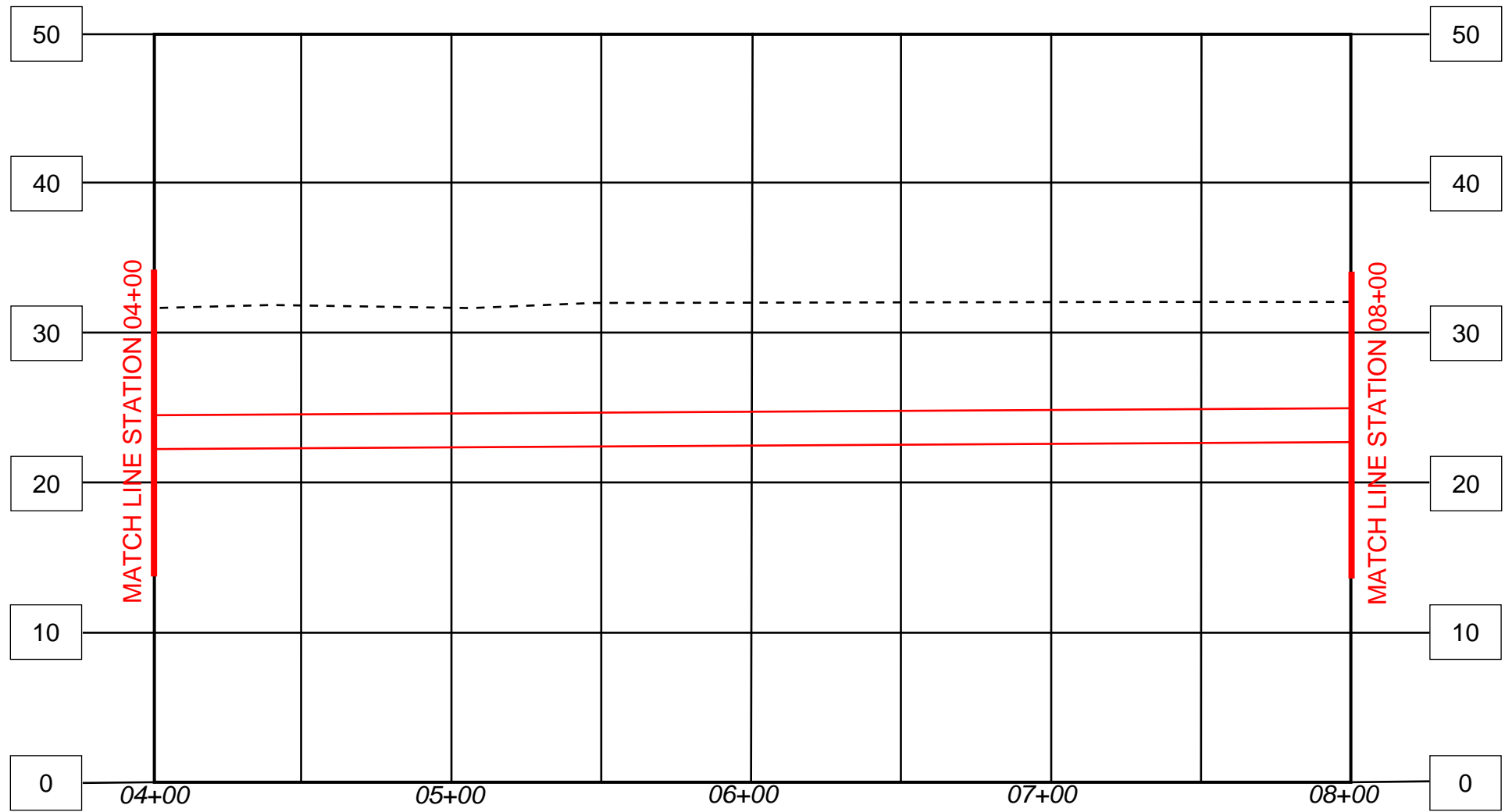
|   |                  |
|---|------------------|
| K9 ENGINEERING                                    | SHEET 1 OF 8     |
| 511 PUMP STATION 100% FINAL DESIGN<br>TITLE SHEET |                  |
| ENGINEER OF WORK<br>JAMES VALDEZ                  | DATE<br>04/16/20 |



MATCH LINE STATION 04+00  
SEE DWG C-2

**C-1**

|  |                  |
|--|------------------|
| <b>K9 ENGINEERING</b>  | SHEET 2<br>OF 8  |
| 511 PUMP STATION 100% FINAL DESIGN<br>PLAN AND PROFILE<br>STA 00+00 TO STA 04+00 |                  |
| ENGINEER OF WORK<br>JAMES VALDEZ   | DATE<br>04/16/20 |

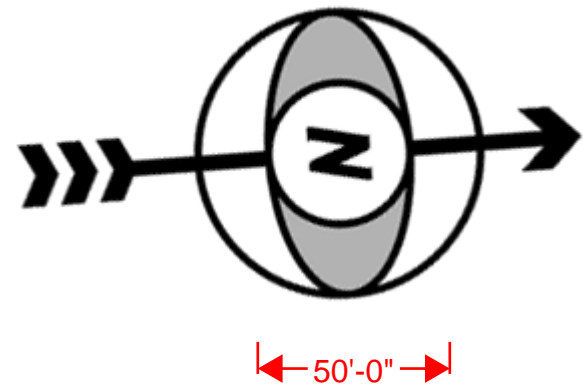
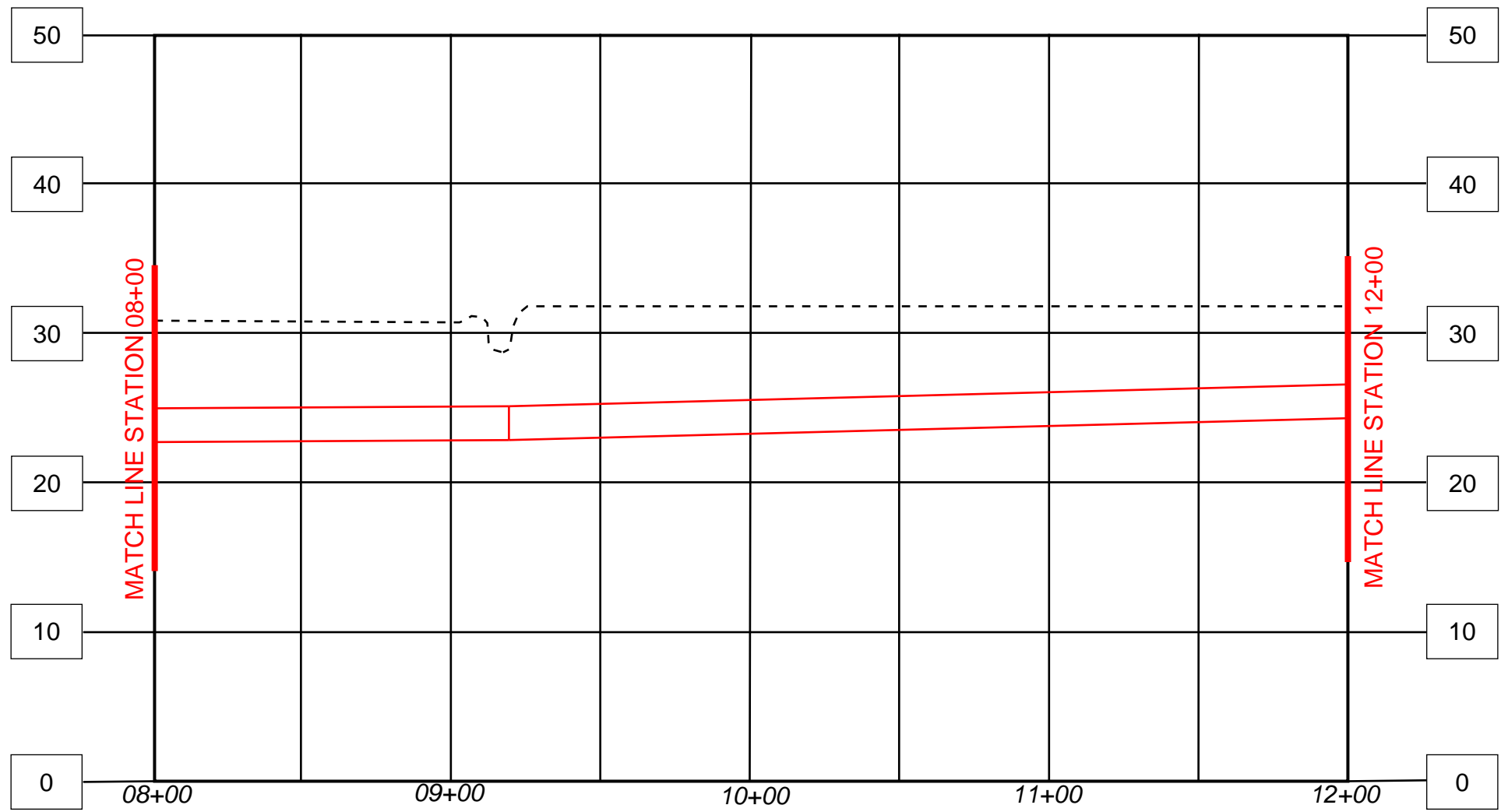


← 50'-0" →



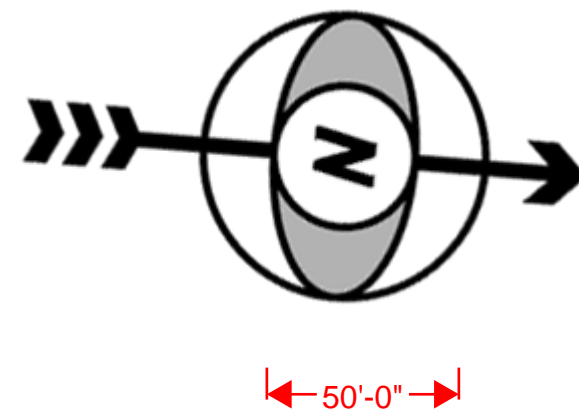
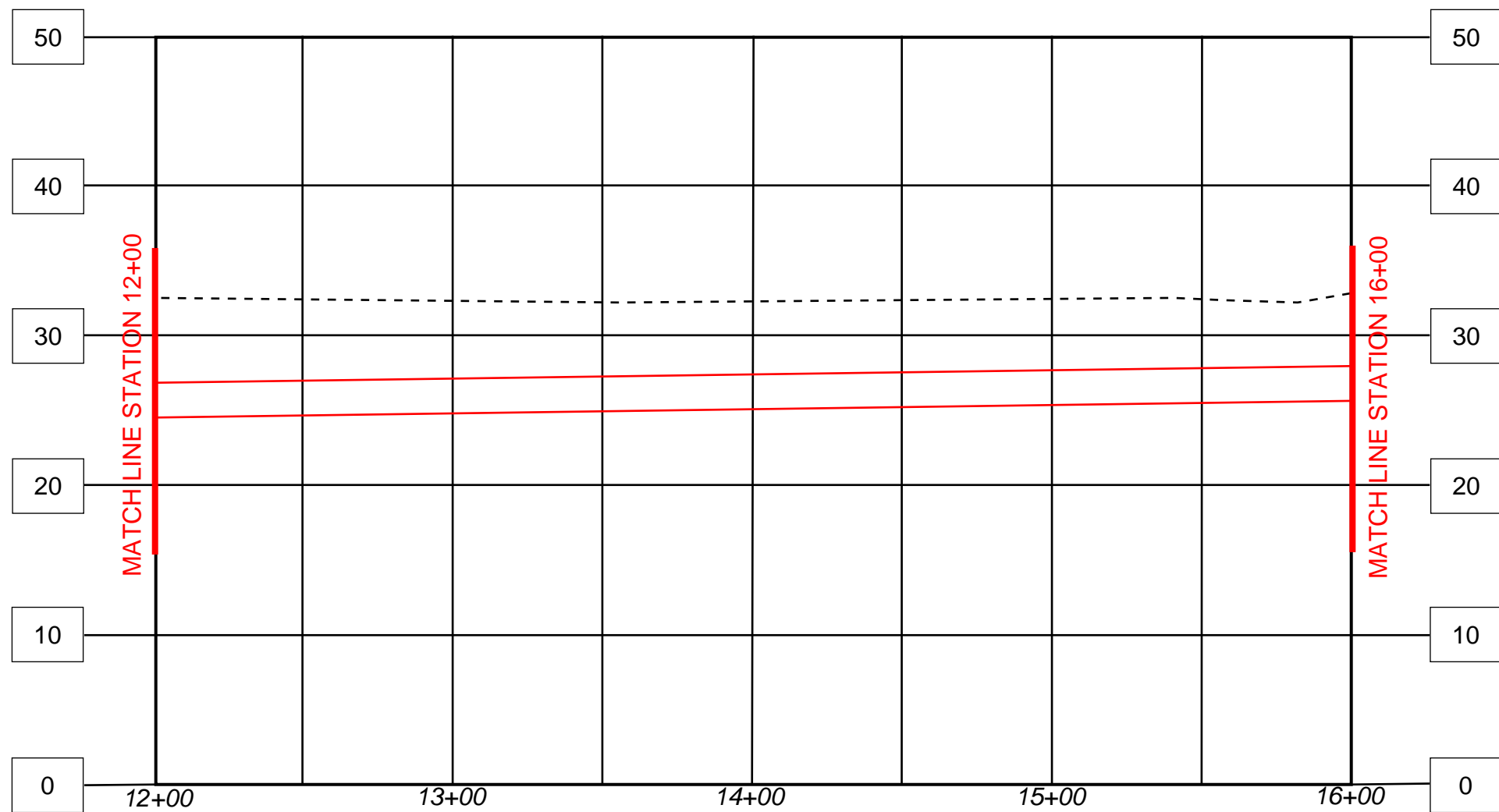
C-2

|  |                  |
|--|------------------|
| K9 ENGINEERING   | SHEET 3<br>OF 8  |
| 511 PUMP STATION 100% FINAL DESIGN<br>PLAN AND PROFILE<br>STA 04+00 TO STA 08+00 |                  |
| ENGINEER OF WORK<br>JAMES VALDEZ   | DATE<br>04/16/20 |



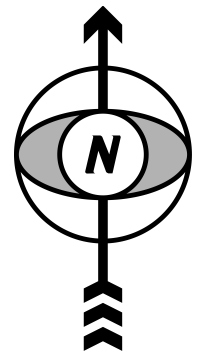
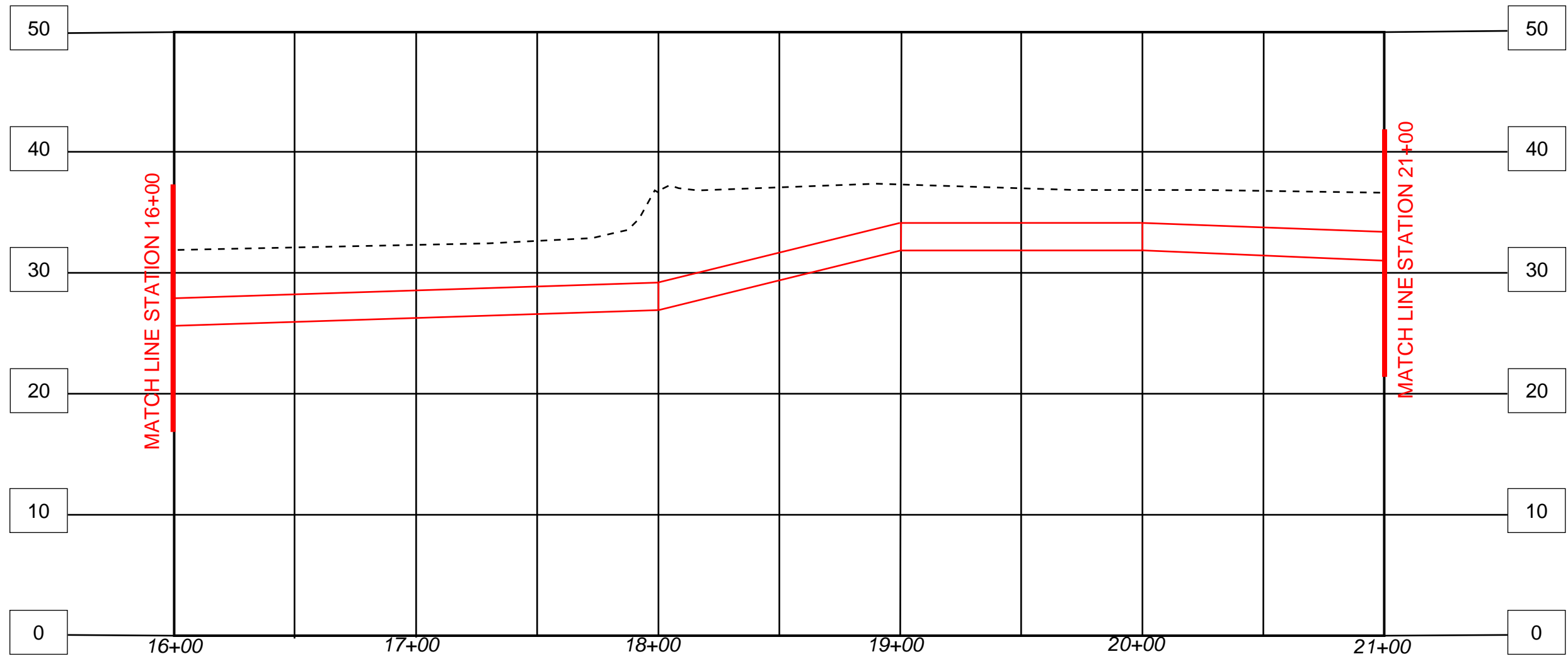
C-3

|  |                  |
|--|------------------|
| K9 ENGINEERING   | SHEET 4 OF 8     |
| 511 PUMP STATION 100% FINAL DESIGN<br>PLAN AND PROFILE<br>STA 08+00 TO STA 12+00 |                  |
| ENGINEER OF WORK<br>JAMES VALDEZ   | DATE<br>04/16/20 |



C-4

|  |                  |
|--|------------------|
| K9 ENGINEERING   | SHEET 5<br>OF 8  |
| 511 PUMP STATION 100% FINAL DESIGN<br>PLAN AND PROFILE<br>STA 12+00 TO STA 16+00 |                  |
| ENGINEER OF WORK<br>JAMES VALDEZ   | DATE<br>04/16/20 |



80'-0"

C-5

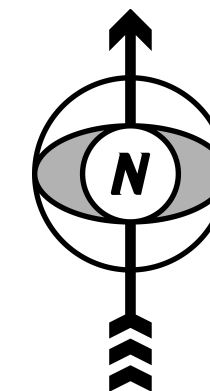
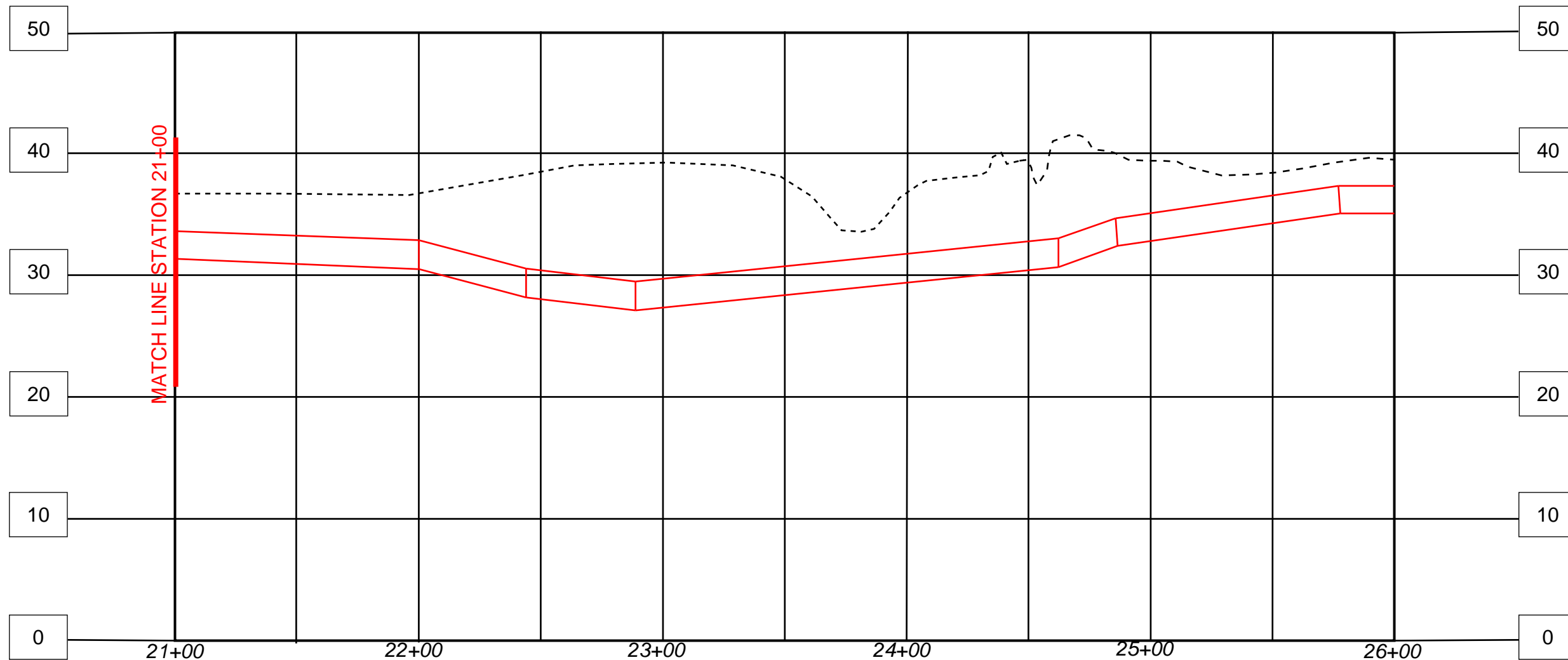
K9 ENGINEERING

SHEET 6 OF 8

511 PUMP STATION 100% FINAL DESIGN  
PLAN AND PROFILE  
STA 16+00 TO STA 21+00

ENGINEER OF WORK  
JAMES VALDEZ

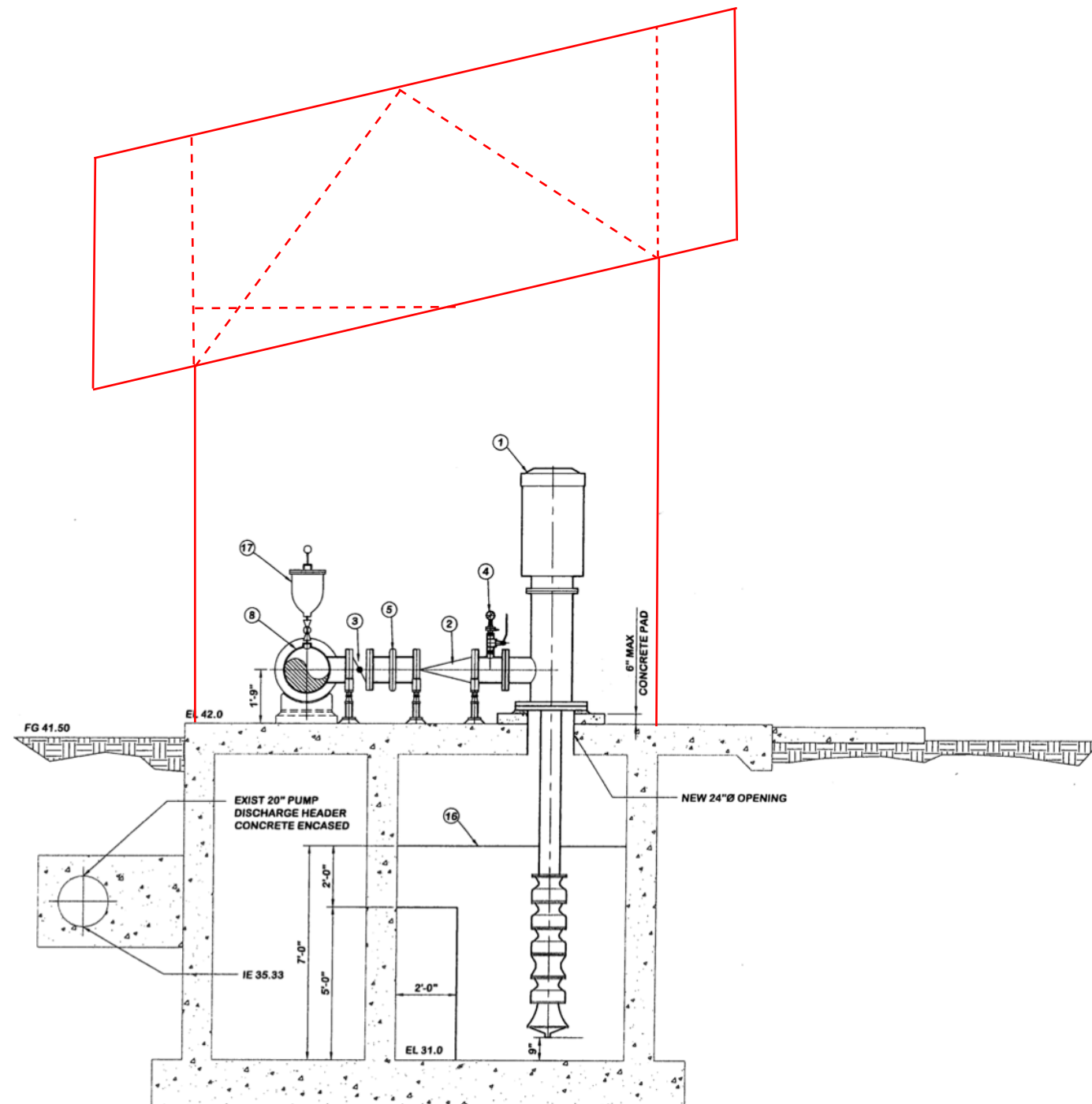
DATE  
04/16/20



← 80'-0" →

C-6

|  |                  |
|--|------------------|
| <b>K9 ENGINEERING</b>  | SHEET 7<br>OF 8  |
| 511 PUMP STATION 100% FINAL DESIGN<br>PLAN AND PROFILE<br>STA 21+00 TO STA 26+00 |                  |
| ENGINEER OF WORK<br>JAMES VALDEZ   | DATE<br>04/16/20 |



C-7

K9 ENGINEERING

SHEET 8  
OF 8

511 PUMP STATION 100% FINAL DESIGN  
SECTION AND DETAILS

ENGINEER OF WORK

DATE

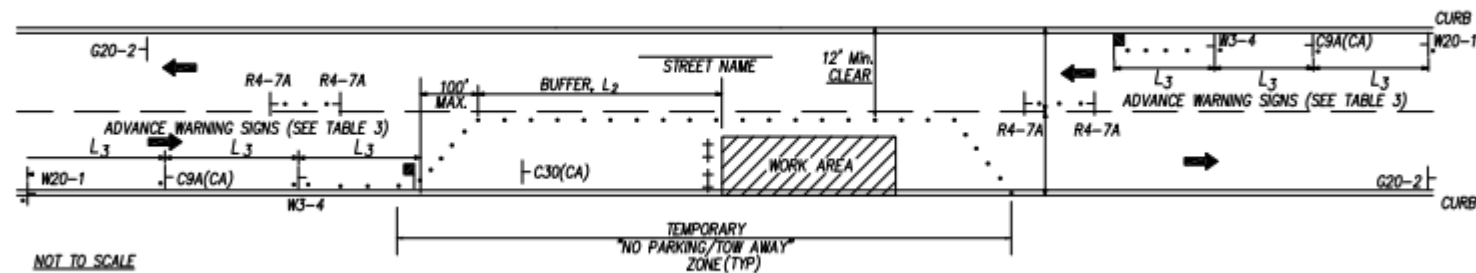
JAMES VALDEZ

04/16/20





**TYPICAL LANE CLOSURE WITH REVERSIBLE CONTROL**



\*\*\*The following Traffic Control Plan derives from the City of Oceanside's Traffic Control Guidelines\*\*\*

**C-7**

**K9 ENGINEERING**

SHEET 8  
OF 8

**511 PUMP STATION 100% FINAL DESIGN  
TEMPORARY TRAFFIC CONTROL**

ENGINEER OF WORK

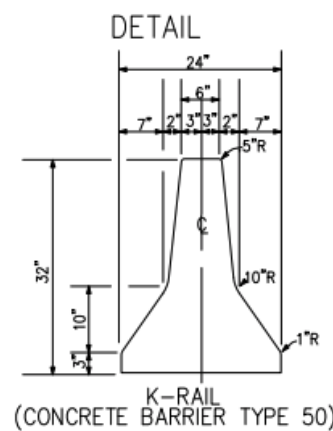
JAMES VALDEZ

DATE

04/16/20

**LEGEND**

- DIRECTION OF TRAVEL
- T PORTABLE SIGN
- TRAFFIC CONE/DELINEATOR
- ± TYPE II BARRICADE
- Y FLAGGER
- Y FLAG TREE
- ←←← FLASHING ARROW SIGN
- \* PORTABLE FLASHING BEACON (SEE SIGNAGE NOTE #3)
- K-RAIL (TYPE 50 CONCRETE BARRIER)
- [CMS] CHANGEABLE MESSAGE SIGN



**SIGNS**

- |           |          |         |         |         |
|-----------|----------|---------|---------|---------|
| W20-1     | W1-4(RT) | R9-11a  | W20-4   | C30(CA) |
| W20-5(RT) | W1-3(LT) | R9-10   | W21-5   | W13-1   |
| W20-2     | C9A(CA)  | R4-7a   | C12(CA) | G20-2   |
| W4-2(RT)  | W3-4     | C30(BK) | R11-2   | R9-9    |