



# Fenton Parkway Bridge

Mikel Ciafre, Roman Gonzalez, Erika Kenion, Jacobo Velasco, Nicholle Noelle Willis, Ross Wong

## About Us



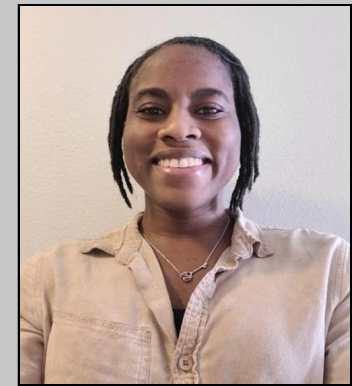
Nicholle Noelle Willis  
Civil Engineer



Mikel Ciafre  
PM/Civil Engineer



Roman Gonzalez  
Environmental Engineer



Erika Kenion  
Civil Engineer



Jacobo Velasco  
Geotechnical Engineer



Ross Wong  
Civil Engineer

## Existing Conditions



City: San Diego  
Bridge will be located east of San Diego State West Campus. North of Camino Del Rio N & Mission City Parkway. And South of Fenton Parkway & Northside Drive. Bridge will connect Camino Del Rio N & Mission City Pkwy over the San Diego River with Fenton Pkwy & Northside Dr.



## Design and Approach

### Structural

#### Type of Bridge

- Based upon the length and abutment placement
- Could not have an abutment in the river environment, so used a **through-arch bridge**

### Traffic

#### Intersection Dimensions

- Necessary Street Widening on Eastern Side of Fenton Parkway
- Three Legged Intersection
- Two 11' Southbound Lanes on Fenton Parkway
- Two 11' Northbound Lanes on Fenton Parkway
- 6' Wide Bicycle Lanes on Both Sides of Fenton Parkway

#### Traffic Signal Design

- Fully Actuated 3 Phase Traffic Signal with Priority on Fenton Parkway
- Traffic Signal will be Synchronized with MTS Trolley and Rail Crossing Gate
- Designed to meet Forecasted Traffic Demand with an A Level of Service

### Roadway Design

- demolition, street widening, and horizontal/vertical alignment
- will follow Caltrans specifications
- road profile with asphalt depths and drainage grade

### Geotechnical

#### Recommendations

- Deep Pile Foundation
- Socketed Caisson (Drilled Pile)
- 2 piles per pier

### Stormwater

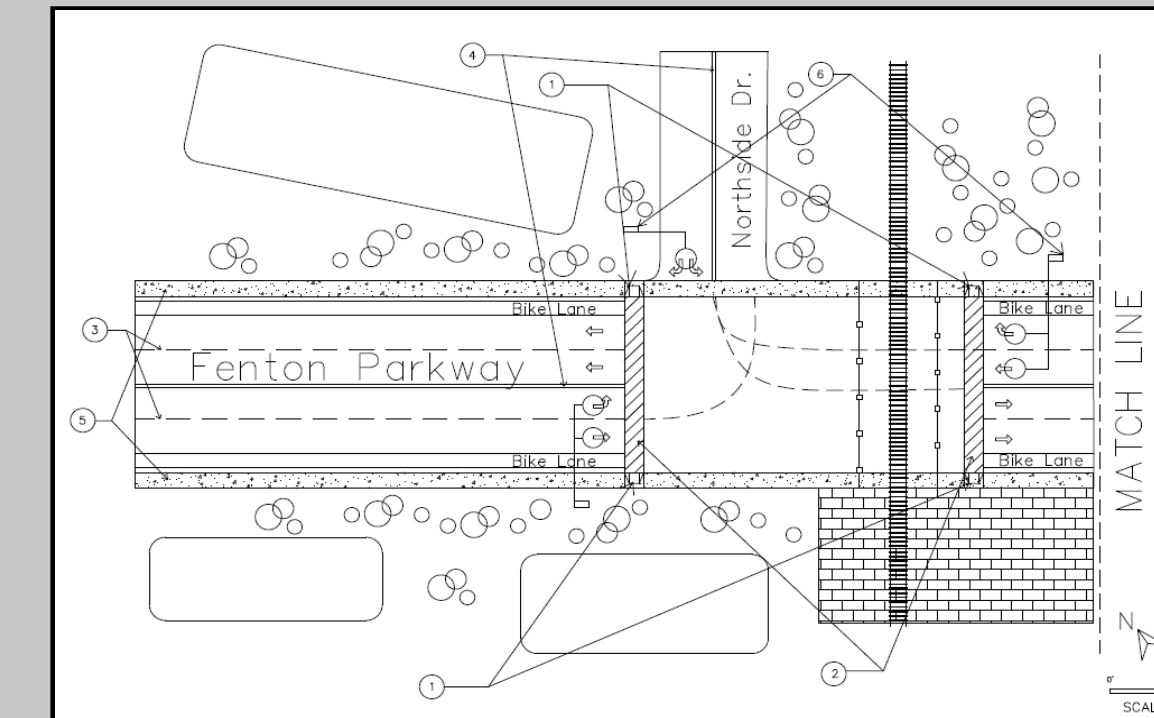
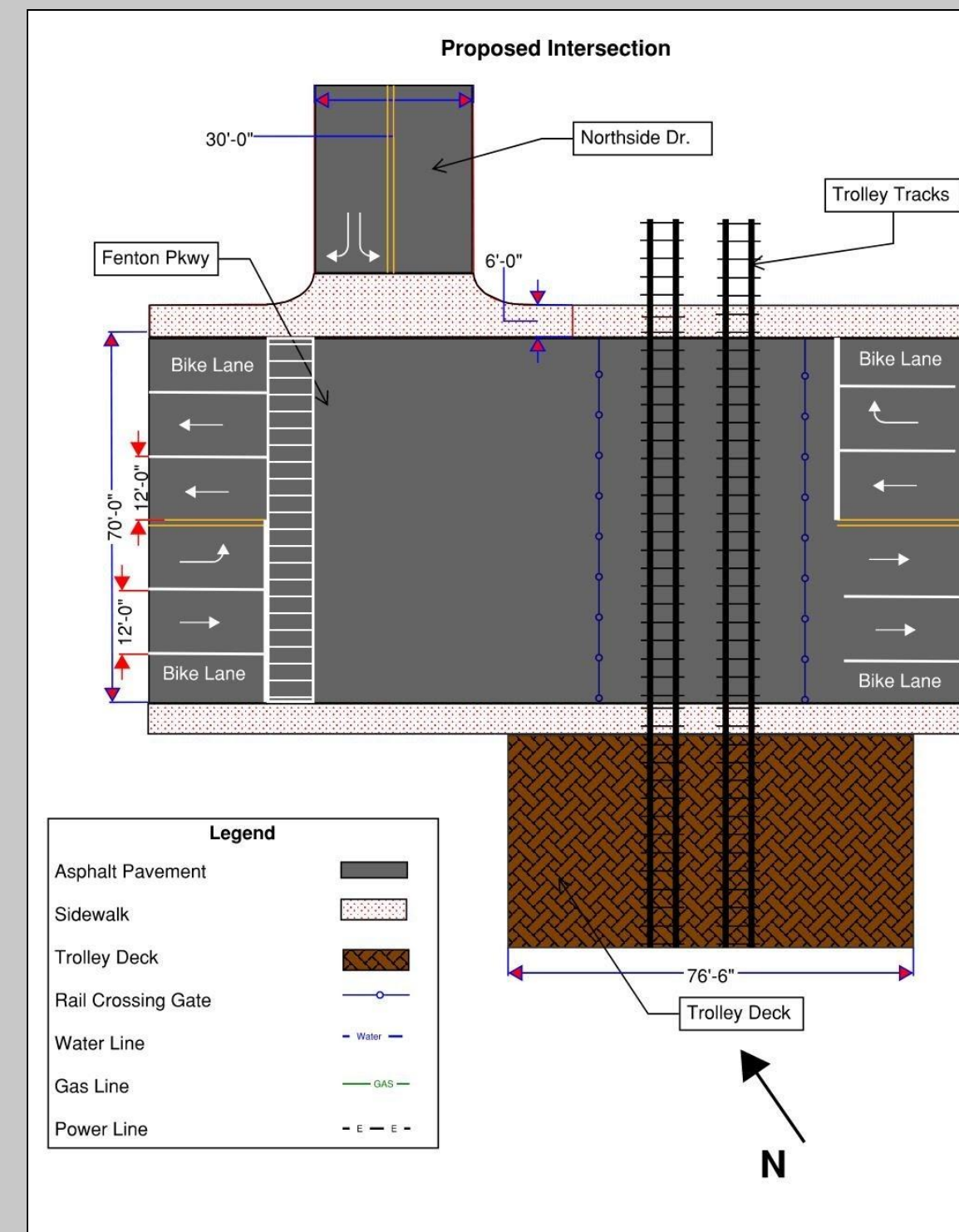
- Recommended Treatment
- Bioretention Basin

## Project Objectives

To propose a design for Fenton Street Bridge

- Structural
  - Bridge Design
  - Calculations
- Site Civil
  - Street Improvement Plans
  - Traffic Signal Plans
  - Grading Design
  - Cost Estimate
  - Street Design
  - Geotechnical Study
- Stormwater
  - Drainage Study
  - SWQMP
  - BMPs
  - Erosion Control – Post Construction
- Design Impact
  - Public, Health, Safety, & Welfare
  - Global Factors
  - Social Factors
  - Environmental Factors
  - Economic Factors
- ISI Envision
- USGBC LEED

## Proposed Conditions



## Findings

### Stormwater

- Existing Conditions
- Land Use: Recreational
  - Vegetation: Riparian
  - Watershed Identification: Lower San Diego 907.1
  - Discharge Location: Pacific Ocean, Ocean Beach Area
  - Tributary Area: 1.21 acres

### Geotechnical

- CPT (Cone Penetration Test)
- 7 layers total (silty sand, clay, gravelly sand and bedrock)
- Water table is located at 0.2m
- Soil is susceptible to liquefaction
- No significant seismic motion was found

### Pollutants of Concern

- Indicator Bacteria
- Sediments
- Nutrients
- Heavy Metals
- Trash & Debris